

## **Handout 3-5: Option 5: Establish an Intelligence/Investigations Function**

Establishing the Intelligence/Investigations (I/I) Function with ICS can address complex incidents by allowing an IC/UC to initiate intelligence/investigations activities while ensuring that life safety operations remain the primary incident objective. The I/I Function operates concurrently with, and in support of, life safety operations to protect evidence at crime and investigative scenes.

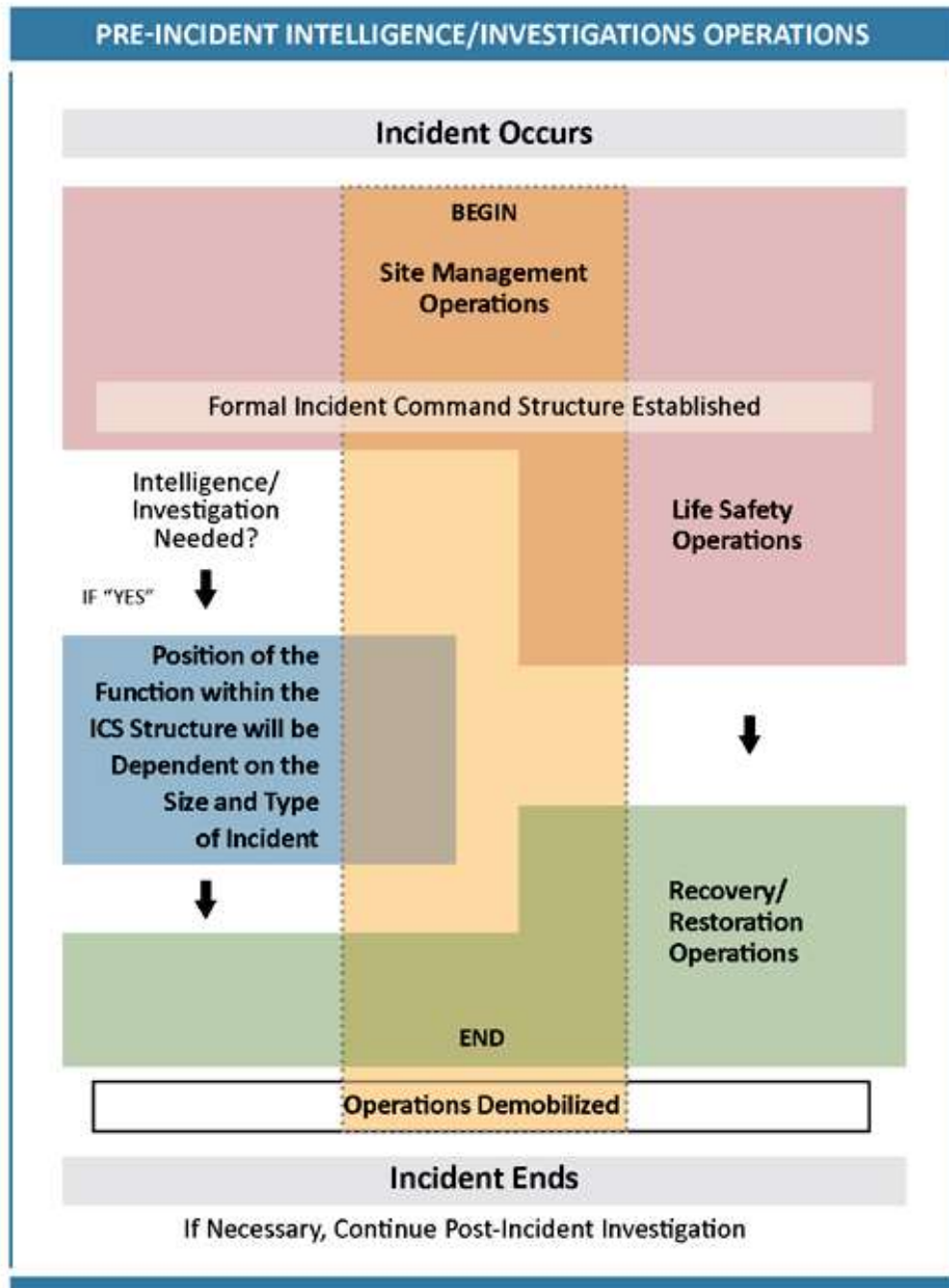
The purpose of the intelligence/investigations function within ICS is to:

- Determine the source or cause of the incident (e.g., disease outbreak, fire, complex coordinated attack, or cyber incident) to control its impact and/or help prevent the occurrence of similar incidents.
- Collect, analyze, and share information and intelligence.
- Inform incident operations to protect the lives and safety of response personnel as well as the public.
- Interfacing with counterparts outside the ICS organization to improve situational awareness.

### **When to Establish the I/I Function**

Many domestic incidents, such as natural disasters or industrial accidents, have an obvious cause and origin. However, other domestic incidents, such as large-scale fires, public health emergencies, explosions, transportation incidents (e.g., train derailments, airplane crashes, bridge collapses), active shooters, terrorist attacks, or other incidents causing mass injuries or fatalities, require an intelligence or investigative component to determine the cause and origin of the incident and/or support incident/disaster operations. Although, in many cases, law enforcement departments/agencies fulfill intelligence/investigations duties, the I/I Function has aspects that cross disciplines and levels of government. “Nontraditional” forms of intelligence/investigations activities (i.e., non-law enforcement) might include:

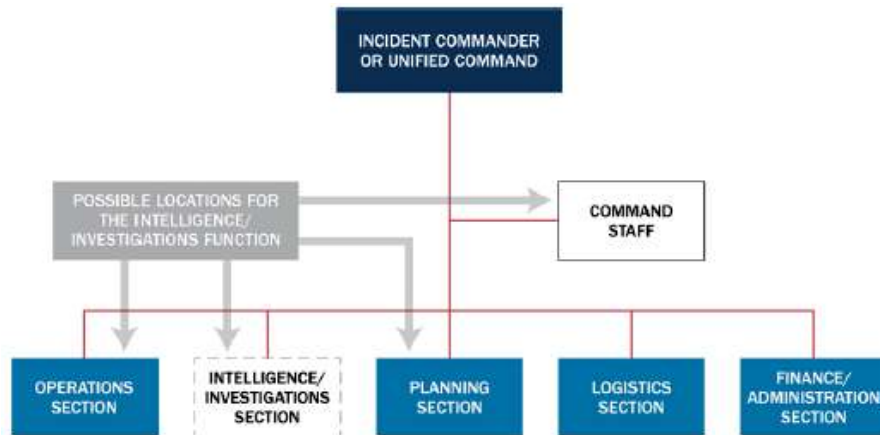
- Epidemiology
- Mass fatality management
- Fire, explosion, or arson cause and origin (regardless of likelihood of criminal activity)
- Real-time research and analysis intended to protect against, respond, and/or recover from a specific incident (e.g., critical infrastructure vulnerability and consequence analysis; hurricane forecast regarding strength and estimated point of landfall; post-earthquake technical clearinghouse; or post-alert volcanic monitoring)
- Transportation accidents



## Options for Placement of the Intelligence/Investigations Function

The Intelligence/Investigations functions are typically performed by staff in the Operations and Planning Sections. However, for incidents that involve or may involve a significant level of intelligence/ investigative work, the Incident Commander or Unified Command may choose to consolidate the intelligence/investigations function in the ICS organization in a number of ways.

The intelligence/investigations function's location in the ICS structure depends on factors such as the nature of the incident, the level of intelligence/investigations activity involved or anticipated, and the relationship of the intelligence/investigations activities to the other incident activities. The intelligence/investigations function can be incorporated as an element of the Planning Section, in the Operations Section, within the Command Staff, as a separate General Staff section, or in some combination of these locations:



When I/I is established as a separate Section, the I/I Section Chief has the option of creating one or more Groups to oversee the activities of the Section:

