

## Handout 3-4: Option 4: Add a Second Operations or Logistics Section

While not common, it is possible to establish a second Operations or Logistics Section within a single incident. This situation may arise when the incident is operating under Unified Command; however, Unified Command is not a requirement.

### When To Add Operations or Logistics Sections

**Operations Section.** An additional Operations Section should be added in an incident in which the sheer volume of resources required means that the Operations Section cannot be further expanded without exceeding ICS span-of-control guidelines and it is not possible to establish separate incidents. This organizational option is designed to address issues of span of control and geography, not function.

I/I can include its own Investigative Operations Group, which can function somewhat like a second operations section, but it is not a second operations section within this definition because it is functional, not geographic and not related to span of control.

Examples of situations where two Operations Sections may be established include:

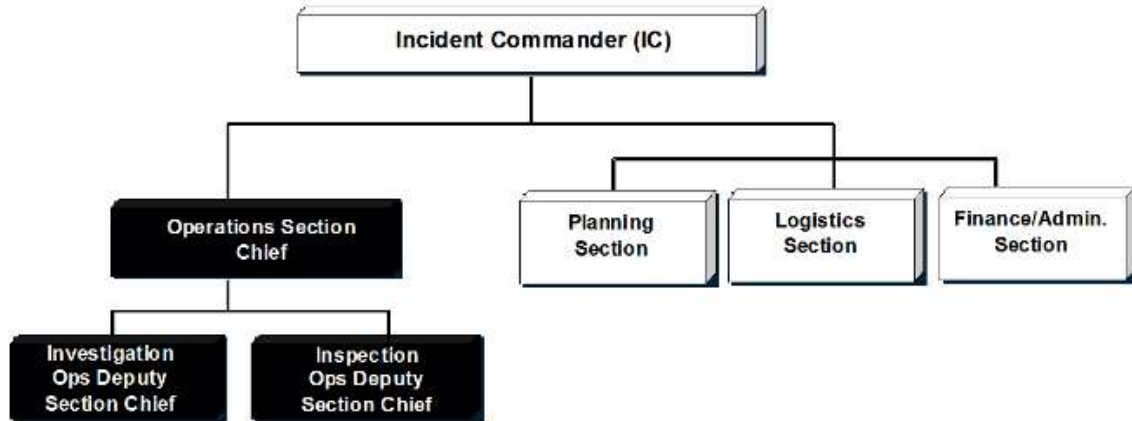
- Earthquake, hurricane, tornado, or flooding that covers several political jurisdictions
- A major wildland fire that continues to expand
- A major spill in a waterway
- Public health crisis/epidemic
- Domestic terrorist incident

**Logistics Section.** If an incident is so geographically dispersed that it is not feasible for the Incident Base to support the incident logistical needs, it may be necessary to establish another Logistics Section.

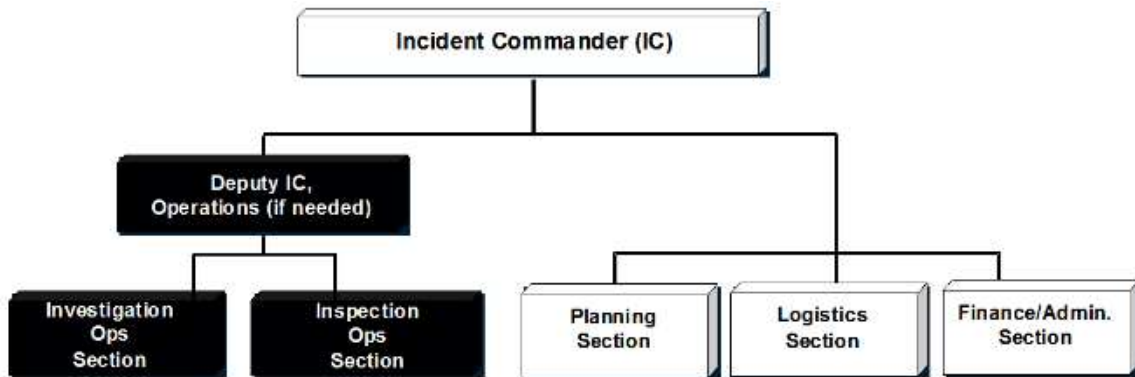
### ICS Organizational Strategy

**Operations Organization.** If the organization grows so that it is not desirable to expand the Operations Section further, a second Operations Section may be established.

A more commonly used solution is to add Deputy Operations Section Chiefs under the Operations Section Chief to manage respective areas—for example, in a public health emergency an Operations Section could be responsible for a public health investigation and inspection of sites related to a food-borne disease outbreak. In this case the Operations section could establish separate Investigation and Inspection Deputy Operations Section Chiefs reporting to the Operations Section Chief as shown in the diagram below.



Another option would be to split the Operations Section into Investigation and Inspection Sections, if needed under a Deputy Incident Commander for Operations, as shown below.



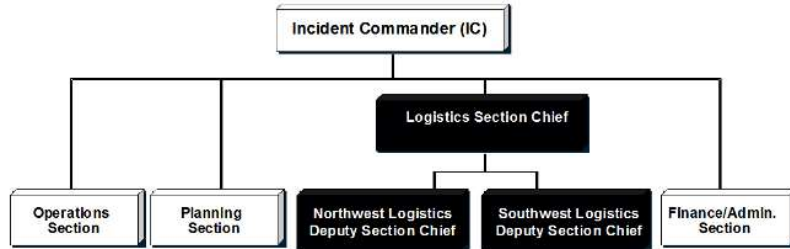
The Deputy Incident Commander for Operations or Deputy Operations Section Chiefs:

- Have the responsibility to ensure that all aspects of both the original and the additional Operations Sections are fully coordinated with each other and with other Sections
- Are normally co-located with the Incident Commander at the Incident Command Post

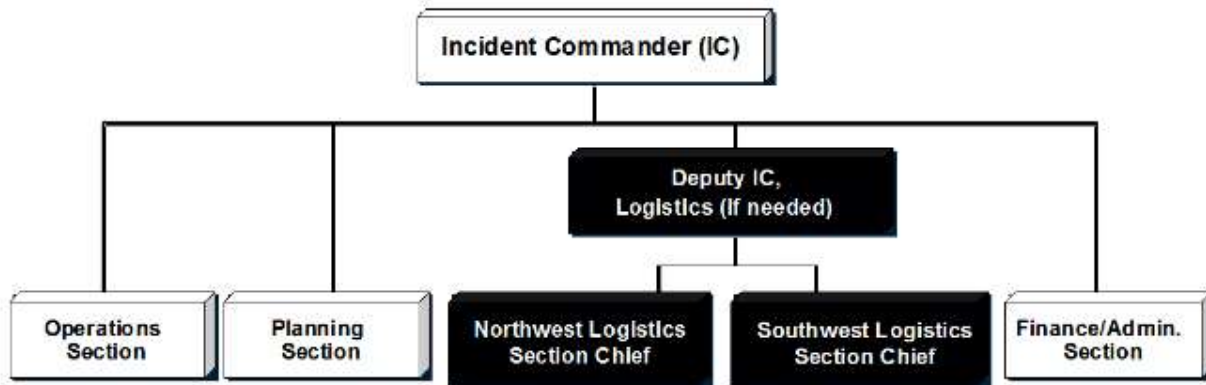
Separate Staging Areas are established to support each Operations Section.

**Logistics Organization.** A second Logistics Section may be added in a geographically dispersed incident.

In this diagram, Northwest and Southwest Logistics Sections report to the Logistics Section Chief.



In this diagram, Northwest and Southwest Logistics Section Chiefs report to the Deputy IC for Logistics.



- Similar to the example with the Operations Section, a Deputy Incident Commander for Logistics could be added to the command structure if necessary to ensure coordination of the two Logistics efforts.
- The Deputy Incident Commander for Logistics would normally function from the Incident Command Post, while the two Logistics Section Chiefs could operate from separate Incident Bases. The Deputy Incident Commander would ensure that all necessary coordination was taking place between the two Logistics Sections.
- An Incident Base for each Logistics Section could be established. Also, additional camps supported by each Incident Base could be established.

## Considerations

The considerations for adding an Operations or Logistics Section include:

- Add a Deputy Incident Commander for Operations or Logistics, if necessary.
- Establish the second Operations or Logistics Section at the beginning of an operational period.
- Ensure that Command and General Staffs can support the expansion (enough personnel to support two separate Operations or Logistics Sections).

- Ensure that you have addressed how the two Operations or Logistics sections will participate in development of a common Incident Action Plan.
- Ensure adequate logistics support and deconflict resources between the two operations sections.
- Ensure that all incident supervisory personnel are aware of how they will interact with the separate Operations or Logistics Sections.